





Ampoules ranging from 1ml to 30ml in Clear and Amber

- *Flame Cut (Form B)*
- *Open Funnel (Form C)*
- *Rota (Form D)*
- *Cut and Glazed*
- *Closed Funnel*
- *Marzocchi*
- *DIN/ISO*



With

- *One Point Cut (OPC)*
- *Printing*
- *Snap Ring (Colour Break)*
- *Identification Bands*
- *Multiple Rings*

*Our Ampoules can be  
customized to suit  
your every need*

---

# *Tubular Vials*

---



## Tubular Vials ranging from 1ml to 50ml in Clear and Amber

- *Injection Vials*
- *Lyo Vials*
- *Insulin Vials*
- *Blow Back Vials*
- *Penicillin Vials*
- *Pill Vials*
- *Screw Neck Vials*
- *Perfume Vials*
- *Diagnostic Vials*
- *Printed Vials*



*Camera equipped  
electronic inspection  
systems ensure the  
delivery of flawless  
Vials*



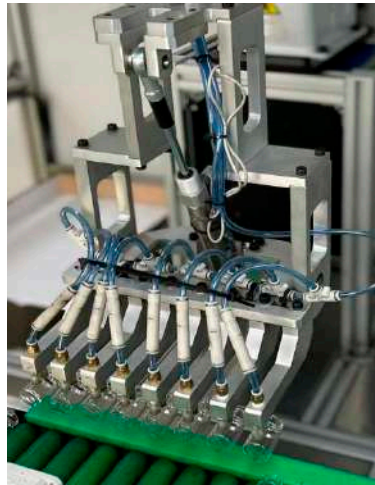


---

# *Infrastructure & Technology*

---

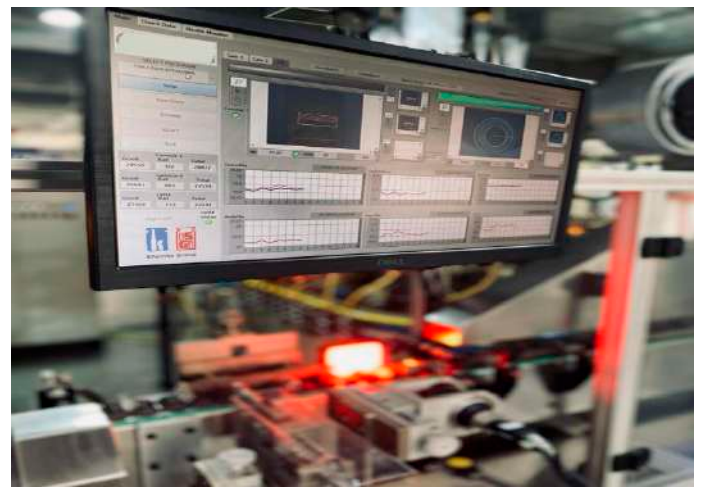




*State-of-the-art high speed production lines imported from Europe, equipped with on-line electronic inspection systems are used to manufacture Ampoules and Vials, which are custom made to suit your every need*



*Every product, accompanied by our guarantee of superior quality, is methodically checked before dispatch*



*Production and visual inspection are carried out in dust-free and air-conditioned environments respectively*



**+ 91 7402202341, + 91 9952538046**



**[www.suryahomeware.com](http://www.suryahomeware.com)**



**[trade@alashwin.in](mailto:trade@alashwin.in)**